

# MINUTES OF MEETING

Meeting Number 24

CLG	Kedron Community Liaison Group				
Location:	Visitor Information Centre, Lutwyche	Date:	13 October 10	Time:	6:30pm

*These minutes are not intended to be a verbatim account of the CLG meeting but are a summary of the key issues raised, actions arising from the meeting and outcomes of actions raised at previous meetings.*

<b>Attendees:</b>		
<p><b>CLG members</b> - Anastasia Dick (AD), Kate Macdonald (KM), Col Harrington (CH) Michael Brown (MB), Maria Lawson (ML), Diane Curtin (DC), Derek Matthews (DM), Bruce Davis (BD)</p> <p><b>Project Personnel</b> – Gail Furnas (GF)-TJH, Luke Chippindale (LC)-TJH, Nicola Mitchell (NM)-TJH, Kenneth Fyfe (KF)-TJH, David Ide (DI)-TJH, Louise Litchfield (LL)– CNI, Lauren Diamond (LD) – CNI, , David Rankin (DR)–BCS, Facilitator: Barry Spring (BS), Geoff Hopwood (GH) – Brisconnection, Kerry Wastell (KW) - CNI</p>		
<b>Apologies:</b> Elizabeth Rowland, Deidre McCue		
Distribution (Method e.g. email): Email		
1.0	<b>Welcome, apologies and action items</b>	
2.0	<p><b>ACTION ITEMS:</b></p> <p><b>Action 1: Provide a presentation of the revised Airport Link Operation Centre (ALOC) site access.</b> A presentation was provided by David Rankin during the CLG meeting and is appended to these minutes.</p> <p><b>Action 2: Follow up and provide information on addressing future noise mitigation:</b> CNI noted the requirements for the Department of Environment &amp; Resource Management to monitor noise levels in the future. CNI met with the BCC and the Department of Main Roads and Transport last week to question how they intend on managing noise mitigation in the future. CNI were advised that contact details for the relevant departments will be supplied closer to the time.</p> <p><b>CLG would like confirmation that the information for noise modelling was gathered across the suburbs where the noise was measured.</b> CNI advised that the complete noise modelling is currently under review. If the review shows the data to be inaccurate the data will be amended. CLG requested that someone explain how the modelling was conducted and how the figures are calculated.</p> <p><b>ACTION: TJH/CNI to provide an explanation of how noise modelling is calculated.</b></p> <p><b>CLG requested to see 'Plan B' for noise mitigation in the future. Members would like to know what the plan is if the current noise mitigation strategies do not work. CLG members feel that the residents should not have to endure the noise that is / will be generated.</b> CNI advised that there is noise mitigation in place. CNI has to follow and adhere to the modelling and modelling calculations.</p>	<p>DR</p> <p>LL</p> <p>CH</p> <p>LL</p> <p>CH</p> <p>LL</p>

# MINUTES OF MEETING

Meeting Number 24

CLG	Kedron Community Liaison Group				
Location:	Visitor Information Centre, Lutwyche	Date:	13 October 10	Time:	6:30pm

	<p><b>CLG member confirmed that CNI has a limited life, until end of project.</b></p> <p>CNI advised that the Coordinator General will remain, and that noise mitigation is under the control of the Department of Environment &amp; Resource Management. CNI noted that there will be a contact number for community members with noise issues to contact the Coordinator General and their issue will be passed on to the relevant department.</p>	<p>MB</p> <p>LL</p>
	<p><b>Action 3: Investigate external property cleaning in the Norman Ave area.</b></p> <p>TJH advised that house cleaning on Perry St, Windsor St &amp; Norman Ave has been suspended as the houses are no longer being dirtied by TJH works. The bulk of the work in this area is now being completed underground. TJH will continue to monitor dust levels as the work progresses and will take action if required.</p>	<p>GF</p>
	<p><b>CLG Member noted that after the heavy rain on 11/10/10 all houses would now be clean. Member feels that any dust and dirtying of homes will now be generated by the project and is hoping that discussions about dust storms etc will no longer be used as an excuse.</b></p>	<p>KM</p>
	<p><b>Action 4: Look into the suitability of the footpath (near Norman Street along Lutwyche Road) for disabled persons.</b></p> <p>TJH advised that when the restoration from service relocation works was completed the corner was asphalted so that it would marry up with the new footpath. TJH noted that this is a temporary footpath and in the last week of October or first week of November the area will be excavated to incorporate traffic signals for the intersection. At the moment the footpath is suitable for use by disabled persons.</p>	<p>GF</p>
	<p><b>CLG Member noted that the footpath does appear to be safer than previously.</b></p>	<p>ML</p>
	<p><b>Action 5: Follow up with what changes occurred in the August minutes and amend the changes if necessary.</b> CLG Member noted that pages 5 &amp; 9 of the previous minutes needed to be amended. TJH advised that an email was sent to the CLG Member who requested the amendment. The member indicated that she did not receive the email.</p>	<p>KM</p>
	<p><b>ACTION: TJH to forward the email outlining the amendments to the August Minutes to concerned CLG Member.</b></p>	<p>NM</p>
	<p><b>Action 6: Provide additional information in the monthly construction update of Services Relocation Flyer to advise of upcoming night works.</b></p> <p>TJH advised this was completed and additional information was supplied in the September and upcoming October construction updates.</p>	<p>GF</p>
	<p><b>CLG Member noted that they disagreed with the above statement and feel that less information was provided in September that what has previously been supplied.</b></p>	<p>KM</p>
	<p><b>Action7: Follow up on members concern regarding sealing of sewer pipe on her property and report back to the member.</b></p> <p>TJH advised they had left a message on the phone of the concerned member. However the member did not receive these messages. TJH advised that the message stated they had spoken to Queensland</p>	<p>GF</p>



# MINUTES OF MEETING

Meeting Number 24

CLG	Kedron Community Liaison Group				
Location:	Visitor Information Centre, Lutwyche	Date:	13 October 10	Time:	6:30pm

	<p><b>CLG Member requested TJH to provide details of how many metres properties had to be from the construction site to require a pre-condition report needing to be carried out.</b></p>	ML
	<p><b>CLG Member questioned if Brookfield Road was an area where condition reports were conducted?</b> TJH responded that they were unsure if it was identified. TJH advised there was a predetermined distance from the construction area where condition surveys are completed.</p>	KM GF
	<p><b>ACTION: TJH to advise if condition surveys were completed on Brookfield Rd, to report back on what areas had condition reports completed and how many metres properties had to be from the construction site to require a pre-construction report to be carried out.</b></p>	GF
	<p><b>Action 10: CLG Member to advise residents of damaged properties to contact the Community Hotline.</b> CLG Member has put leaflets in residents' mailboxes advising them to contact either the Community Hotline or her.</p>	DC DC
	<p><b>Action 11: Liaise with CLG Members regarding the follow up visit to outline the claims process</b> TJH have made phone calls to the Property Division to arrange a follow up visit.</p>	GF
	<p><b>Action 13: Regarding pathway from Brookfield Road at Gympie Road:</b> CLG Member reported that the lights were off between 6.30 – 7.00pm, when the site was closing down. TJH reported that the light are now hard-wired and TJH has asked the site to make sure the lights are turned on half an hour earlier. <b>CLG member finds that the pathway is still dark at night.</b></p>	MB GF DC
	<p><b>ACTION: TJH to investigate where lights are actually located.</b></p>	LC
	<p><b>Action 14: Facilitator to report back on progress of the revised Terms of Reference review at the next CLG Meeting:</b> Facilitator advised that the review of the Terms of Reference (ToR) has been completed. Its aim was to achieve greater consistency across all CLGs and for the ToR to reflect the actual situation at CLGs currently. The Facilitator handed out a hard copy to each member and will also send an electronic copy. Members will have until 7 days prior to the next CLG meeting to send comments regarding the changes to the facilitator. Comments will be addressed at the next CLG Meeting. There is a page at the back which is to be signed and returned to the facilitator when the member is happy with the Terms of Reference. This review will be considered the annual review of the CLG.</p>	BS BS BS
	<p><b>ACTION: Comments will be addressed at next meeting</b></p>	

# MINUTES OF MEETING

Meeting Number 24

CLG	Kedron Community Liaison Group				
Location:	Visitor Information Centre, Lutwyche	Date:	13 October 10	Time:	6:30pm

	<p><b>Action 15: Look at the monthly services relocation updates supplied to residents and provide more detail regarding upcoming works.</b> TJH advised that more information has been incorporated in the October Monthly Construction Update. (a copy was provided to each member)</p> <p><b>Action 16: Liaise with resident regarding the removal of shipping containers in Erskine Avenue.</b> TJH advised that there is no intention of moving containers whilst construction is underway. TJH will liaise with residents prior to removal.</p> <p><b>CLG Member questioned why the noise wall finishes between 2 properties on Erskine Ave</b> CNI advised they are currently discussing this with BrisConnections. More research needs to be conducted.</p>	<p>GF</p> <p>GF</p> <p>CH LL/KW</p>
2.0	<p><b>PRESENTATION ON AIRPORT LINK OPERATIONAL CENTRE (ALOC) ACCESS</b></p> <p><b>A Presentation was made by David Rankin about the changes to the entrance points of the ALOC Site.</b></p> <p><b>Main points of the presentation were:</b></p> <ul style="list-style-type: none"> <li>• ALOC building will have BrisConnections corporate, tolling, operations and maintenance, tunnel control centre and incident response teams</li> <li>• There will be boom gates and security presence to control access to the site</li> <li>• There will be 3 Incident Response vehicles, located in the following places:             <ul style="list-style-type: none"> <li>○ ALOC building</li> <li>○ East-West Arterial</li> <li>○ Bowen Hills</li> </ul> </li> <li>• Incident Response vehicles will be placed at the ALOC centre overnight</li> <li>• The main reason for the change of entry points is that the initial plan was rejected by the Department of Main Roads and Transport as it was too close to the Stafford Road and Gympie Road intersection and could pose a safety risk</li> <li>• Maintenance is carried out overnight – the workers have a pre work meeting from 8-10pm, tunnel maintenance when required will see sections of the tunnel closed at 10pm and workers head straight home after work is completed.</li> </ul> <p><b>ACTION: Brisconnections, Communication Coordinator, Michelle Barisic &amp; Gail to undertake door knocking and letterbox drop of information on the changes.</b></p> <p><b>A CLG Member noted that the new plan appeared to show more car parking?</b> Brisconnections stated the amount of car parking is still being discussed as they need to make sure client requirements are met.</p> <p><b>CLG Member sought clarity from Brisconnections regarding changes to the entry point which reduce the number of vehicles passing residents' homes along Brookfield Road.</b></p> <p><b>Brisconnection stated that maintenance and staff vehicle access was changed to meet Department of Transport and Main Roads requirements.</b></p>	<p>DC DR</p> <p>DR</p>

# MINUTES OF MEETING

Meeting Number 24

CLG	Kedron Community Liaison Group				
Location:	Visitor Information Centre, Lutwyche	Date:	13 October 10	Time:	6:30pm

	<p><b>CLG Member questioned what the pale green section outside the site area is on the diagram?</b> CNI advised that it is currently unallocated open space and the land is owned by Department of Transport Main Roads. TJH advised their models show open space in this area.</p> <p><b>CLG Member enquired about the ALOC driveway design change regarding the width of the entrance/exit point off Brookfield Road and whether there will be any noise mitigation.</b></p> <p><b>CLG Member seeking clarity on the location of the driveway being next to the last block of units/townhouses on Brookfield Road?</b> Brisconnections responded that the exit is approximately 14m. The driveway is about 6.5 metres wide spreading to 14m at the exit. Brisconnections also noted that there has been no decision made on a noise wall for the new access point but noted there is a need for some noise mitigation.</p> <p><b>CLG Member asked what the north facing aspect of the building will look like as she can see it from her back verandah.</b></p> <p><b>CLG Member noted that in a presentation by Jan Jensen earlier in the year that the northern walls appeared to be windowless.</b> Brisconnections advised that the Tolling Department and BrisConnections corporate offices will be located on the top floor, and from their understanding the windows on the northern wall are high and are to let in natural light only.</p> <p><b>ACTION: Brisconnections to supply a picture of the Brookfield Road (northern) elevation.</b></p>	<p>KM LL GF AD  DC DR  DC AD DR  GF</p>
3.0	<p><b>GENERAL BUSINESS</b></p> <p><b>CLG Members advised that they met with the Coordinator General and Minister for Infrastructure and Planning in relation to the conduct of the CLG meetings and the structure of the agenda.</b> The conditions set down by the Coordinator General state that the forum (CLG) is to provide advice to the community in a timely manner. The Members felt this means the CLG meetings are meant to be proactive and address mitigation issues. The CLG Members feel that this is not happening. Members feel that the Coordinator General's conditions suggest that the CLG Members are to be involved in the decisions regarding mitigation issues. Members feel the CLG should be a CCC – Community Consultative Committees. Facilitator noted that these meetings have always been termed CLGs. There is a consultative quality as members are free to discuss issues and CLG meetings try and solve issues that are brought to the table. TJH stated that presentations regarding construction had occurred in past months however, the CLG seemed to concentrate on administrative issues rather than construction activities. TJH will now further advise at the CLG what is happening with upcoming construction.</p> <p><b>CLG Member noted that the first hour and a half was spent on presentations –</b> Facilitator noted that a majority of the time was spent addressing actions that the CLG members require to be dealt with. Facilitator also noted that there is less time spent on presentations as members requested more time for general business.</p> <p>TJH noted that they spend a lot of time on minutes, and the integrity of the minutes. When construction information was provided members were not interested.</p> <p><b>Result from meeting with the Coordinator General and Minister: Coordinator General and Minister are going to speak with CNI.</b></p>	<p>MB  BS GF  BS  GF  MB</p>

# MINUTES OF MEETING

Meeting Number 24

CLG	Kedron Community Liaison Group				
Location:	Visitor Information Centre, Lutwyche	Date:	13 October 10	Time:	6:30pm

<p><b>ACTION:</b> CLG Member to circulate letter to members and facilitator detailing the discussion.</p> <p>CLG Member feels that there was no choice given to residents regarding noise walls and they had to accept the structures in their entirety. Residents were advised that due to structural design constraints by Department of Transport and Main Roads consultation for the noise wall was not available however, TJH consulted on the colour of the noise wall. CLG member advised that in the consultation phase she suggested her preference for a living wall to be constructed.</p> <p>CLG Member feels that as residents living adjacent to the infrastructure, noise walls and flyover off-ramps suggestions should be taken on board, and that the decision making process seems to be a one way street. CLG Members feel that TJH are in their backyards.</p> <p>CLG Member feels there is a lack of respect shown to her and other members of the community and she objects to that. Facilitator stated that this was a generalisation. Facilitator reiterated that mutual respect between the CLG members and TJH is extremely important within this forum.</p> <p><i>CLG Member reported to the CLG the comments of a resident who had stated that "residents felt aggrieved TJH were in our backyards, messing up the neighbourhood and TJH felt aggrieved that the residents were in their worksite, messing up the project" and that these opposing perceptions were the cause of antagonism between impacted residents and the project contractors.</i></p> <p>CLG Member asked if it was possible to have a representative from DTMR come to a CLG Meeting and discuss why work must be carried out at night instead of during the day &amp; DERM to discuss noise levels.</p> <p><b>ACTION:</b> TJH to contact DTMR and see if someone can attend the next CLG Meeting to explain traffic requirements and DERM to explain noise levels.</p> <p>CLG Member feels that TJH, CNI and Brisconnections are misusing the words liaise and consultation. Member feels that design changes are made when it suits, but will not take into account the community requirements, and that TJH, CNI and Brisconnections are not liaising or consulting with the community.</p> <p>CLG Member noted that the CLG Members are proactive and turn up to meetings but there is information that is not mentioned and changes that the community is not made aware of. TJH advised that they send out notifications to ensure that residents are aware of work and changes however, due to the recent wet weather, timetables have changed.</p> <p>CLG noted that they understand schedules change and they are not professionals in assessing construction schedules.</p> <p>CLG Member had some positive feedback from the community regarding the footbridge from Brookfield Road to Gympie Road being reinstated, although there is some concern about it being in a darker area.</p> <p>CLG Member reported that people are upset in terms of the lack of advice regarding the closure of the western bridge of Kedron Brook. CLG Member looked at the bus shelter where there had been</p>	<p>MB</p> <p>CH</p> <p>ML</p> <p>CH</p> <p>MB</p> <p>KM</p> <p>BS</p> <p>KM</p> <p>CH</p> <p>GF</p> <p>KM</p> <p>MB</p> <p>GF</p> <p>MB</p> <p>MB</p> <p>DC</p>
---	---

# MINUTES OF MEETING

Meeting Number 24

CLG	Kedron Community Liaison Group				
Location:	Visitor Information Centre, Lutwyche	Date:	13 October 10	Time:	6:30pm

	<p><b>previous information but there was no notice to tell residents what had happened. Notification was hard to see and there was only one notification hung in the area. This occurred on the 24 September made it uncomfortable trying to walk home. Member also reported that due the darkness some females are uncomfortable walking home alone.</b></p> <p>TJH unsure what happened to the signage as they produced maps clearly advising of the temporary access.</p> <p><b>CLG Member commented on the state of Lamington Avenue and other roads in the area (Cremorne Street, Somerset Street, Broughton Road, Clarence Road, Homebush Road etc). Member was advised by TJH that these roads are the responsibility of BCC. Member will discuss concerns with the local councilor and TJH will discuss with the Busway team.</b></p> <p><b>ACTION: TJH to discuss Lamington Ave with Busway</b></p> <p><b>CLG Member noted that Clarence Rd and Homebush Rd were closed at the roundabout and residents were not notified on one occasion</b> TJH advised that Energex was carrying out that work.</p> <p><b>CLG Member questioned what effect the project had on the Kedron Brook building site and how much room would be taken up at the completion of the project.</b> TJH advised that the size of the bridges will be the permanent size of the footprint on the Kedron Brook, allowing for some additional landscaping. TJH confirmed that the Kedron Bus Station will not affect the Kedron Brook.</p> <p><b>CLG Members questioned the effect of all the recent rain on the Kedron Site, and how much equipment was lost</b> TJH advised that the Kedron Brook had done what it was meant to do; it drained water. TJH has recovered all of their equipment.</p> <p><b>CLG Member is concerned about the brook overflowing into the Gordon Park and associated areas due to the construction site within the brook and wanted to understand the immediate effects construction had on the Kedron Brook.</b> TJH have a number of factors to consider: <ul style="list-style-type: none"> <li>• The hard catchment area (roofs, roads parking lots etc) increased up stream in the past 15 years, this increases the amount of run off immediately entering waterways</li> <li>• There are approximately 80kms of waterways running into the Kedron Brook</li> <li>• Where rain falls within the catchment</li> <li>• The rate of the rainfall</li> <li>• Upstream dam release</li> </ul> </p> <p>TJH indicated the Kedron Brook stormwater channel is working as intended.</p>	<p>DC</p> <p>GF</p> <p>ML/M B</p> <p>NM</p> <p>MB GF</p> <p>KM</p> <p>KF</p> <p>KM KF</p> <p>KM KF</p> <p>GF</p>
4.0	<p><b>Construction Update - presentation given by David Ide Project Manager, Thiess John Holland. Activities over the coming month:</b></p> <p><b>Kedron Brook Building Site</b></p> <ul style="list-style-type: none"> <li>• Blasting, breaking and excavation to the connection of CC210 Plenum area completed during September 2010</li> <li>• Construction of CC210 Arch &amp; Plenum base slabs and walls well underway with the smoke</li> </ul>	

# MINUTES OF MEETING

Meeting Number 24

CLG	Kedron Community Liaison Group				
Location:	Visitor Information Centre, Lutwyche	Date:	13 October 10	Time:	6:30pm

duct slabs commencing by end September 2010. All slabs should be completed in October 2010

- Access maintained for tunnelling operations
- Excavation to VE100 (connects tunnel to ventilation station) ongoing under road slab
- Breakthrough by the tunnelling crews into the Northbound tunnel due in October 2010

### Perry Street Precinct

- Concrete and support works continue underneath the cut and cover structure (north bound off ramp) adjacent to Perry St
- Stage 2 piling is complete
- The reinstatement of the footpath along the western side of Gympie road will be opened as soon as the wet weather clears
- Removal of the existing unsuitable ground has commenced for the new Kedron bus Station to be built
- Excavation for the section of the tunnel ventilation system parallel to Gympie Road has commenced
- Concrete structural works have commenced in the Kedron Park Hotel car park which should be complete by mid Oct
- Concrete and support works continue in the cut and cover structure underneath the recently rebuilt Lutwyche Road (west bound off ramp).

### Gympie Road (Kedron Brook to Arnott Avenue)

- Excavation beneath the realigned Gympie Road continues blasting due to commence on the underground works from mid October, heading towards Kedron Brook. This activity will continue over the next 6 months to excavate the hard rock under Kedron Brook and to eventually link the tunnel through to the bored tunnel sections
- Concrete slabs in CC210N have commenced and will follow the excavation as it progress to the south.

### Kedron Brook

- Excavation was completed on the CC210N roof structure with rebar fixing having commenced in late September. Extensive flooding 11/10 has pushed the roof structure completion to the end of October 2010
- Bridge 214 pier construction ongoing and will recommence once the roof structure of CC210N is complete
- Night works for water treatment monitoring at Kedron Brook
- The sewer main running adjacent to the book was grouted to prevent water ingress into the tunnel excavation.

### Gympie Road

- Soil nail wall being installed along the cut and cover structure
- Homebush road re – opened as left turn in. Left turn out of Homebush will open late November.
- Excavation and roof slab construction continuing south of Homebush Road.
- Excavation and roof slab construction continuing north of Broughton Road to Somerset Road.

# MINUTES OF MEETING

Meeting Number 24

CLG	Kedron Community Liaison Group				
Location:	Visitor Information Centre, Lutwyche	Date:	13 October 10	Time:	6:30pm

	<ul style="list-style-type: none"> <li>Ongoing pavement and road works between Broughton and Sommerset Roads.</li> </ul> <p><b>Stafford Road (Gympie Road to Clarence Road)</b></p> <ul style="list-style-type: none"> <li>Photo shows APL access tunnel to the right of the photo</li> <li>Airport Link Operation Centre (ALOC) building site at Stafford Road Superstructure continued</li> <li>Excavation of the Stafford intersection will continue throughout the month of October</li> <li>Construction of the Stafford intersection tunnel structure started on the 12<sup>th</sup> of September and will continue through into December</li> <li>First half of roof slab over RW130 commencing this month.</li> </ul> <p><b>ALOC Site</b></p> <ul style="list-style-type: none"> <li>Level 1 and Plant deck slabs are completed, with minor pours remaining to the structure.</li> <li>Structural steel to the building 75% complete</li> <li>External Facade works (blockwork &amp; glazing) have commenced and will progress thru to Mid November</li> <li>Roofing and external cladding to start late October</li> <li>Stage 2 works – carpark area will start by end October.</li> </ul> <p><b>CLG Member questioned if there was a concrete pour planned for the previous weekend that did not occur due to the wet weather and if it will be rescheduled? CLG member questioned if Lutwyche &amp; Gordon Park can be sent the arch pour notifications as well.</b></p> <p>TJH advised that steel fixing occurred within the arch structure and that a significant amount of water had to be pumped out off the structure. TJH noted that the arch structures were precast. Notifications will be sent out now that the date has been confirmed. To facilitate the pour, this weekend sections of the road will be closed mainly at night and works will involve the use of three pumps to achieve the 2700 cubic meters of concrete required to pour the arch structure.</p> <p><b>CLG Member noted that she could here noise from water pumping on Sunday 11/10/10.</b></p> <p>TJH noted that noise monitoring was conducted on same day by the engineer on duty and nothing could be heard. Monitoring was undertaken throughout the day. TJH are perplexed that only one resident could hear the noise.</p> <p><b>CLG Member questioned why work was undertaken on Stafford Road on Friday night? Member feels this is not appropriate for a residential area.</b></p> <p>TJH advised the DTMR dictate when work can be undertaken on their network when traffic volumes are reduced.</p> <p><b>CLG Member questioned what is ‘danger to the integrity to the structure’? What danger was there on Sunday night?</b></p> <p>TJH responded that over 4 days, 300ml of rain fell. That amount of rain is well over average for 4 days. When there is this much rainfall, structural integrity of the structure can become compromised due to excess weight burden therefore it is paramount for the water to be removed, <i>250,000 lts of water was removed from the structure.</i> For this reason, water was removed on Sunday 10 October. Stakeholders living near the site were advised of the required work.</p>			
				KM
				GF
				KM
				GF
				CH
				GF
				KM
				KF
4.0	<b>Presentation given by Kenneth Fyfe Kedron Environmental Coordinator:</b>			

# MINUTES OF MEETING

Meeting Number 24

CLG	Kedron Community Liaison Group				
Location:	Visitor Information Centre, Lutwyche	Date:	13 October 10	Time:	6:30pm

## Air Quality Monitoring Locations



Image: NearMap 2010

- Sept/Oct Construction Air Quality Monitoring Locations (PM10):**
1. Woolloowin SS
  2. Adjacent to Kedron SHS
  3. Erskine Ave

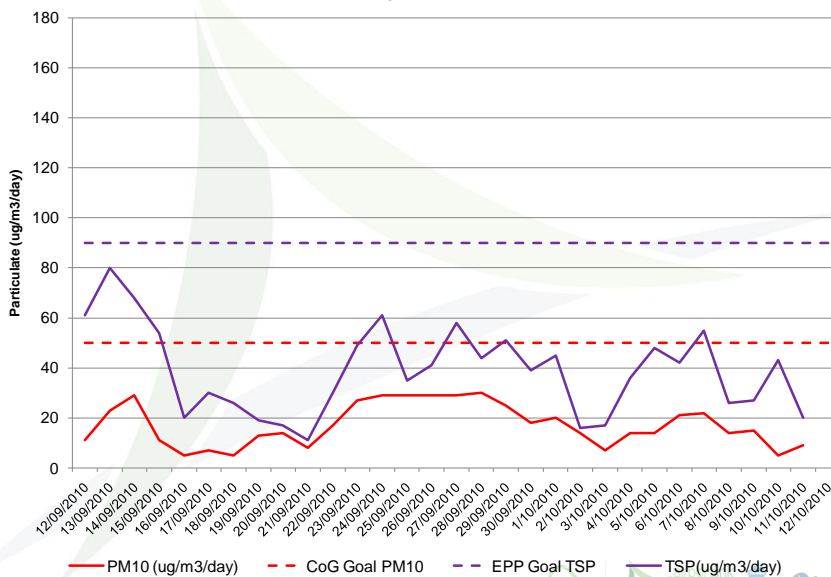


4. Perry St
5. 22 Suez St

- Sept/Oct Air Quality Monitoring Locations - Dust Deposition Gauges:**
1. Woolloowin SS
  2. Adjacent to Kedron SHS
  3. Erskine Ave
  4. Perry St



## Perry Street

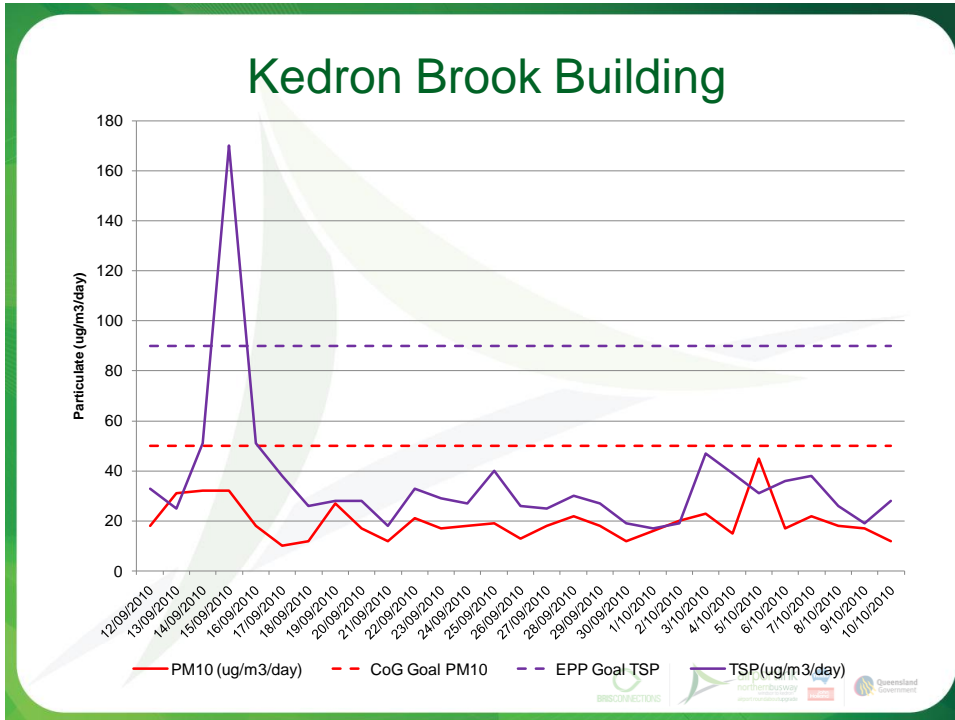
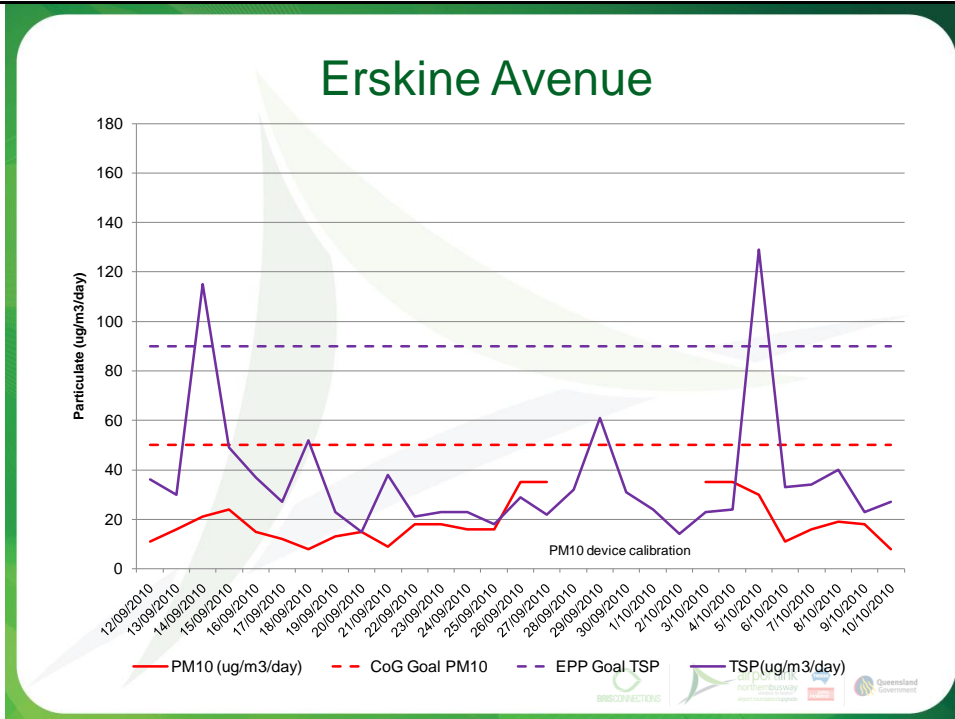


AD  
KF  
KM  
GF  
KF/GF  
KM  
KF

# MINUTES OF MEETING

Meeting Number 24

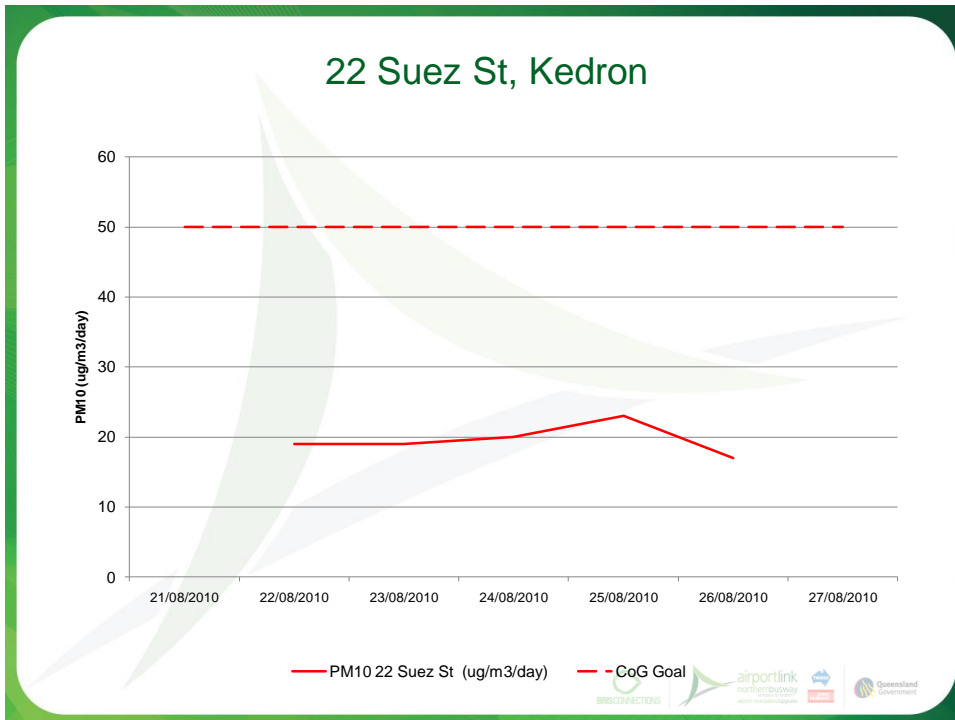
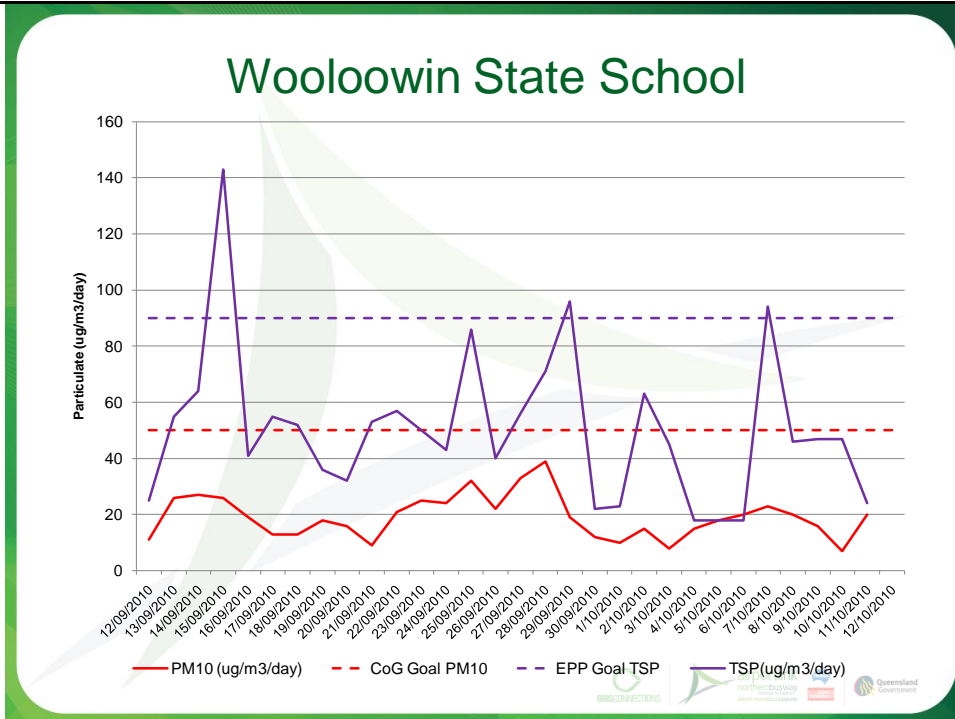
CLG	Kedron Community Liaison Group				
Location:	Visitor Information Centre, Lutwyche	Date:	13 October 10	Time:	6:30pm



# MINUTES OF MEETING

Meeting Number 24

CLG	Kedron Community Liaison Group				
Location:	Visitor Information Centre, Lutwyche	Date:	13 October 10	Time:	6:30pm



# MINUTES OF MEETING

Meeting Number 24

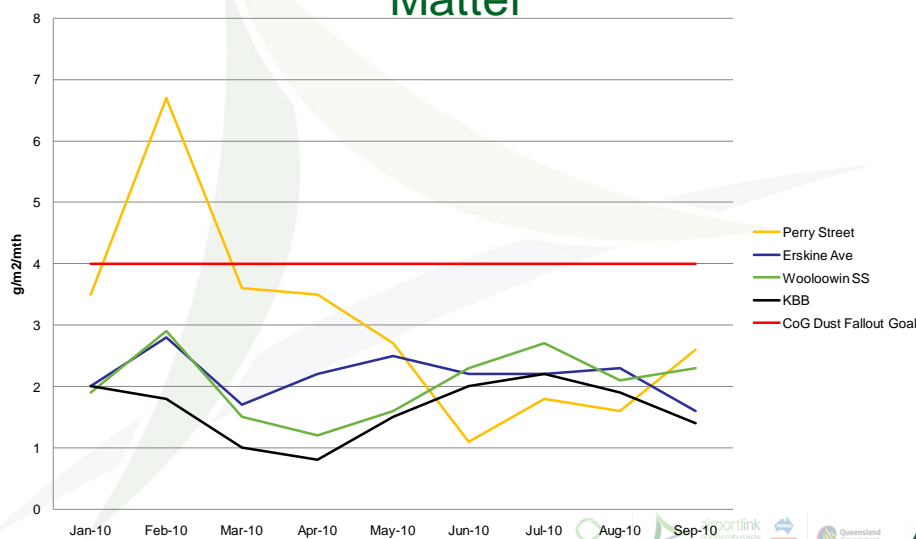
CLG	Kedron Community Liaison Group				
Location:	Visitor Information Centre, Lutwyche	Date:	13 October 10	Time:	6:30pm

## Air Quality Monitoring Results Dust Deposition

Location	Measure Air Quality TSP (grams/m <sup>2</sup> )	CoG Goal TSP (grams/m <sup>2</sup> )	Monitoring Period
Wooloowin SS	2.3	4	06/08/2010 – 09/09/2010
Kedron	1.4	4	06/08/2010 – 09/09/2010
Erskine Ave	1.6	4	06/08/2010 – 09/09/2010
Perry Street	2.6	4	06/08/2010 – 09/09/2010



## Dust Deposition – Total Insoluble Matter



# MINUTES OF MEETING

Meeting Number 24

CLG	Kedron Community Liaison Group				
Location:	Visitor Information Centre, Lutwyche	Date:	13 October 10	Time:	6:30pm

### Dust Deposition Results:

- Monitoring was undertaken at the following sites:
  - Perry St
  - Erskine Ave
  - Kedron Brook Building – Spike may have been mowing of school fields
  - Woolloowin State School
  - 22 Suez St – property backs onto Amelia Park, monitoring was undertaken to see the affect of work in the park.

### Noise Monitoring Results:

## Noise Monitoring Locations





Image: NearMap 2010

**September/October Construction Noise Monitoring:**  
1. 1/15 Windsor Ave




# MINUTES OF MEETING

Meeting Number 24

CLG	Kedron Community Liaison Group				
Location:	Visitor Information Centre, Lutwyche	Date:	13 October 10	Time:	6:30pm

## Noise Monitoring Results

Location	Measured Noise Level Results LAeq	CoG Goal LAeq	Measured Noise Level Results LA10	CoG Goal LA10	Monitoring Period	Comments
1/15 Windsor Ave	48.1	45	49.2	55	17/09/2010 10:10am-10:25am	Lounge room with windows/sliding door open. The predominant noise source was from the piling rigs and tower crane in Kedron South. Noise from local traffic was also audible. A noise NCR has been raised and options for mitigation and further monitoring sessions arranged.
1/15 Windsor Ave	34.4	45	39.9	55	17/09/2010 10:30am-10:45am	Lounge room with windows/sliding door closed. The predominant noise source was from non-TJH activities (local traffic). The tower crane in Kedron South was also audible but below COG goals. A noise NCR has been raised for the windows open sessions and options for mitigation and further monitoring sessions arranged.



- Monitoring was undertaken at Windsor Ave, levels were within CoG goals.

## Blast Monitoring Locations CC210 South





Image: NearMap 2010

**September /October – Blast Monitoring Locations**

- Kedron Park Hotel
- BCC Substation
- 12 Park Tce fence line



# MINUTES OF MEETING

Meeting Number 24

CLG	Kedron Community Liaison Group				
Location:	Visitor Information Centre, Lutwyche	Date:	13 October 10	Time:	6:30pm

## Blast Vibration Monitoring Results

Monitoring Period	Location	Monitor	Activities	Distance From Activities	Method of Monitoring	Overblast pressure (dB)	Goal Overblast pressure (dB)	Peak Particle Velocity (PPV) mm/s	Goal Peak Particle Velocity (PPV) mm/s
25/09/2010	Kedron Park Hotel	Instantel Mini Mate Plus	CC210 South Blasting	40m	Glued Plate	126.8	140	1.9 mm/s	25
25/09/2010	BCC Substation	Instantel Mini Mate Plus	CC210 South Blasting	80m	Glued Plate	128.7	140	0.508 mm/s	25
25/09/2010	12 Park Tce fence line	Instantel Mini Mate Plus	CC210 South Blasting	10m	Glued Plate	128.9	140	6.48 mm/s	25



## Blast Monitoring Locations Westbound Ramp



### September/October– Blast Monitoring Locations

- 37 Park Rd
- 94 Kedron Park Rd
- 34 Park Rd (Kedron High School)
- 28 Eveleigh St



# MINUTES OF MEETING

Meeting Number 24

CLG	Kedron Community Liaison Group				
Location:	Visitor Information Centre, Lutwyche	Date:	13 October 10	Time:	6:30pm

## Blast Vibration Monitoring Results

Monitoring Period	Location	Monitor	Activities	Distance From Activities	Method of Monitoring	Peak Particle Velocity (PPV) mm/s	Goal Peak Particle Velocity (PPV) mm/s
28/09/2010	34 Park Rd (Kedron SHS)	Instantel Mini Mate Plus	Southbound tunnels blasting	52 m	Glued Plate	3.56 mm/s	25
28/09/2010	37 Park Rd	Instantel Mini Mate Plus	Southbound tunnels blasting	41 m	Glued Plate	2.54 mm/s	25
28/09/2010	28 Eveliegh St	Instantel Mini Mate Plus	Southbound tunnels blasting	above	Glued Plate	13.1 mm/s	25
28/09/2010	94 Kedron Park Rd	Instantel Mini Mate Plus	Southbound tunnels blasting	77 m	Glued Plate	4.44 mm/s	25

## Blast Vibration Monitoring Results

Monitoring Period	Location	Monitor	Activities	Distance From Activities	Method of Monitoring	Peak Particle Velocity (PPV) mm/s	Goal Peak Particle Velocity (PPV) mm/s
06/10/2010	34 Park Rd (Kedron SHS)	Instantel Mini Mate Plus	Southbound tunnels blasting	52 m	Glued Plate	2.79 mm/s	25
06/10/2010	37 Park Rd	Instantel Mini Mate Plus	Southbound tunnels blasting	41 m	Glued Plate	2.67 mm/s	25
06/10/2010	28 Eveliegh St	Instantel Mini Mate Plus	Southbound tunnels blasting	above	Glued Plate	10.4 mm/s	25
06/10/2010	94 Kedron Park Rd	Instantel Mini Mate Plus	Southbound tunnels blasting	77 m	Glued Plate	3.17 mm/s	25

# MINUTES OF MEETING

Meeting Number 24

CLG	Kedron Community Liaison Group				
Location:	Visitor Information Centre, Lutwyche	Date:	13 October 10	Time:	6:30pm

## Blast Monitoring Locations Southbound Ramp

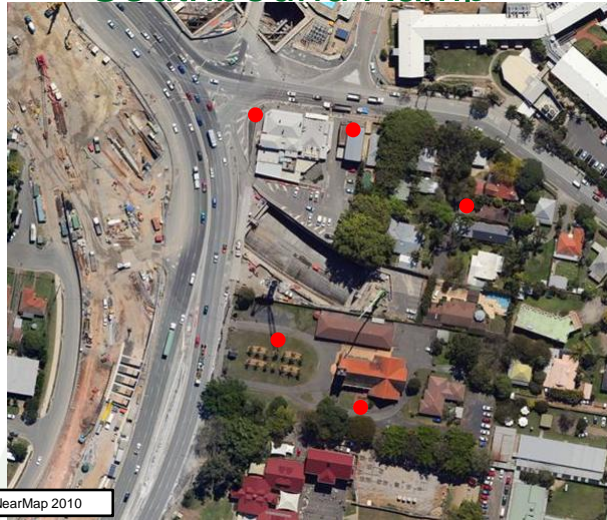


Image: NearMap 2010

### September/October– Blast Monitoring Locations

1. Kedron Park Hotel
2. BCC Substation
3. Anglican Church (2 location)
4. 124 Kedron Park Rd

## Blast Vibration Monitoring Results

Monitoring Period	Location	Monitor	Activities	Distance From Activities	Method of Monitoring	Peak Particle Velocity (PPV) mm/s	Goal Peak Particle Velocity (PPV) mm/s
29/09/2010	Kedron Park Hotel 681 Lutwyche Rd	Instantel Mini Mate Plus	Westbound tunnels blasting	above	Glued plate	3.05 mm/s	25
29/09/2010	BCC Substation 134 Kedron Park Rd	Instantel Mini Mate Plus	Westbound tunnels blasting	50 m	Glued plate	1.02 mm/s	25
29/09/2010	Anglican Church 671 Lutwyche Rd	Instantel Mini Mate Plus	Westbound tunnels blasting	130 m	Glued plate	Less than 0.510mm/s	25
29/09/2010	Anglican Church Driveway 671 Lutwyche Rd	Instantel Mini Mate Plus	Westbound tunnels blasting	90 m	Glued plate	0.76 mm/s	25

# MINUTES OF MEETING

Meeting Number 24

CLG	Kedron Community Liaison Group				
Location:	Visitor Information Centre, Lutwyche	Date:	13 October 10	Time:	6:30pm

## Blast Vibration Monitoring Results

Monitoring Period	Location	Monitor	Activities	Distance From Activities	Method of Monitoring	Peak Particle Velocity (PPV) mm/s	Goal Peak Particle Velocity (PPV) mm/s
6/10/2010	Kedron Park Hotel 681 Lutwyche Rd	Instantel Mini Mate Plus	Westbound tunnels blasting	above	Glued plate	14.6 mm/s	25
6/10/2010	BCC Substation 134 Kedron Park Rd	Instantel Mini Mate Plus	Westbound tunnels blasting	50 m	Glued plate	2.29 mm/s	25
6/10/2010	Anglican Church 671 Lutwyche Rd	Instantel Mini Mate Plus	Westbound tunnels blasting	130 m	Glued plate	0.762 mm/s	25
6/10/2010	124 Kedron Park Rd	Instantel Mini Mate Plus	Westbound tunnels blasting	90 m	Glued plate	2.54 mm/s	25

### Blast Monitoring Results:

- Monitoring was undertaken at the following locations:
  - Kedron Park Hotel
  - BCC Substation
  - 12 Park Terrace
  - Park Road
  - Eveleigh St
  - Kedron Park road

### Discussion and questions arising from presentation:

#### CLG questioned why the dust deposition results are over a month old?

TJH responded that the delay comes from waiting for the results to be tested and sent from the lab.

#### CLG member noted that on 25/9, a blast at 10.10am was felt in Jack St Gordon Park and questioned why this would happen?






TJH responded that this was the first vertical blast. Other blasts, which were on the surface, were covered with rubber mats and earth material. The vertical blast only uses blast mats which are hung over the rock face. The reason the vertical blast was felt further away was due to the over blast pressure which is the movement of air from the blast site.

TJH advised that there are 2 types of blast waves – pressure which is the air – will make windows rattle and ground which makes the ground move.

# MINUTES OF MEETING

Meeting Number 24

CLG	Kedron Community Liaison Group				
Location:	Visitor Information Centre, Lutwyche	Date:	13 October 10	Time:	6:30pm

	<p><b>CLG Member noted that on the 28/09 there was a lot of dust at Lutwyche Road and that no hoses were attached to the jack operators or rock breakers.</b></p> <p>TJH advised that dust is assessed on a daily basis through continual monitoring and hoses are attached if needed.</p>													
5.0	<p><b>Community Relations Update presented by Gail Furnas, Community Liaison Coordinator, Kedron</b></p> <div style="border: 2px solid green; padding: 10px;"> <p style="text-align: center;"><b>Community feedback</b> <b>1 September 2010 – 30 September 2010</b></p> <table border="1" style="width: 100%; border-collapse: collapse;"> <thead> <tr> <th style="background-color: #92d050;">Community feedback</th> <th style="background-color: #92d050;">Total for September</th> <th style="background-color: #92d050;">Total for August</th> <th style="background-color: #92d050;">Total for July</th> </tr> </thead> <tbody> <tr> <td style="background-color: #92d050;">Complaints</td> <td style="background-color: #92d050; text-align: center;">86</td> <td style="background-color: #92d050; text-align: center;">56</td> <td style="background-color: #92d050; text-align: center;">110</td> </tr> <tr> <td style="background-color: #92d050;">Issues/enquires</td> <td style="background-color: #92d050; text-align: center;">41</td> <td style="background-color: #92d050; text-align: center;">47</td> <td style="background-color: #92d050; text-align: center;">23</td> </tr> </tbody> </table> <div style="text-align: right; margin-top: 10px;">      </div> </div>	Community feedback	Total for September	Total for August	Total for July	Complaints	86	56	110	Issues/enquires	41	47	23	
Community feedback	Total for September	Total for August	Total for July											
Complaints	86	56	110											
Issues/enquires	41	47	23											

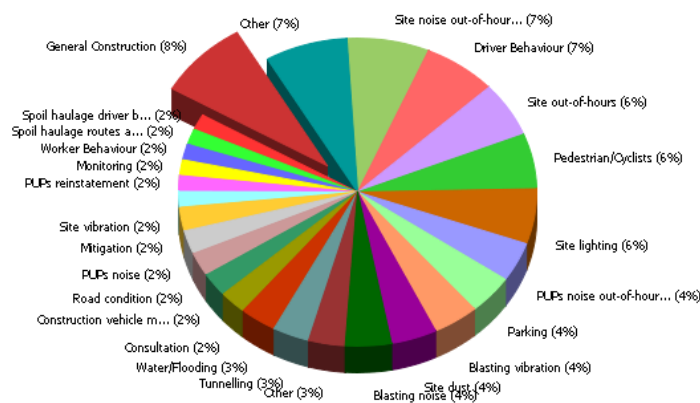
# MINUTES OF MEETING

Meeting Number 24

CLG	Kedron Community Liaison Group				
Location:	Visitor Information Centre, Lutwyche	Date:	13 October 10	Time:	6:30pm

## Community complaints 1 September – 31 September 2010

Issues Raised - Total Events



## Kedron Community Notifications

Twelve notifications were distributed in Kedron during August including:

- Kedron North – Construction Update
- Kedron South – Construction Update
- Leckie Road Night works
- Tunnelling works - Update
- Drill and blast at Kedron south
- Stafford Road Widening
- Precast beam installation – Broughton Road
- Evening concrete pour – Gympie Road
- Homebush Road reinstatement works

A total of 5000 notifications

# MINUTES OF MEETING

Meeting Number 24

CLG	Kedron Community Liaison Group				
Location:	Visitor Information Centre, Lutwyche	Date:	13 October 10	Time:	6:30pm

## Kedron Community Relations activities

- Door knocks regarding:
  - Night works - Precast Beam Installation – Stafford Road
  - Clarence Road closure
  - Early morning concrete pours – south of the Brook
  - Stafford Road widening – Stage 1A activities
  - Norman Avenue residents – waterline construction
  - Drill and blast activities – Kedron south and central
  - Ongoing updates to residents living within close proximity to the Kedron service relocations
  - Consultation with the surrounding Kedron businesses regarding promotional measures.



## Kedron Community Relations activities

- The Community Relations Team (CRT) liaised, and continues to do so, with businesses on Stafford Road to organise promotional material during the Stafford Road widening works.
- The CRT was present for activities associated with the first trial drill and blast conducted in the Kedron south area, beneath the Kedron Park Hotel. Blasts will continue weekly in the south. The CRT was also present in the community for activities resulting from the Saturday Kedron central blast.
- The CRT liaised with Norman Street residents for night works conducted at the intersection of Norman Street and Lutwyche Road.
- The CRT completed two letterbox drops to advise residents of Stafford Road widening activities and upcoming construction activities in September including night work scheduled in preparation for the roof slab concrete pour for the eastbound on-ramp.
- The Kedron CRT continues to distribute the Kedron Park 7 Day Medical Centre's weekly 'business as usual' flyer to the wider northern suburbs.
- Ongoing meetings with residents and businesses as required.



- **86 Complaints**
- **41 issues / enquiries**

### Kedron Community Notifications

# MINUTES OF MEETING

Meeting Number 24

CLG	Kedron Community Liaison Group				
Location:	Visitor Information Centre, Lutwyche	Date:	13 October 10	Time:	6:30pm

	<p>Twelve notifications were distributed in Kedron during August including:</p> <ul style="list-style-type: none"> <li>• Kedron North – Construction Update</li> <li>• Kedron South – Construction Update</li> <li>• Leckie Road Night works</li> <li>• Tunnelling works - Update</li> <li>• Drill and blast at Kedron south</li> <li>• Stafford Road Widening</li> <li>• Precast beam installation –Broughton Road</li> <li>• Evening concrete pour – Gympie Road</li> <li>• Homebush Road reinstatement works</li> </ul> <p>A total of 5000 notifications</p> <p><b>Kedron Community Relations activities</b></p> <ul style="list-style-type: none"> <li>• Door knocks regarding: <ul style="list-style-type: none"> <li>– Night works - Precast Beam Installation – Stafford Road</li> <li>– Clarence Road closure</li> <li>– Early morning concrete pours – south of the Brook</li> <li>– Stafford Road widening – Stage 1A activities</li> <li>– Norman Avenue residents – waterline construction</li> <li>– Drill and blast activities – Kedron south and central</li> <li>– Ongoing updates to residents living within close proximity to the Kedron service relocations</li> <li>– Consultation with the surrounding Kedron businesses regarding promotional measures.</li> </ul> </li> <li>• The Community Relations Team (CRT) liaised, and continues to do so, with businesses on Stafford Road to organise promotional material during the Stafford Road widening works</li> <li>• The CRT was present for activities associated with the first trial drill and blast conducted in the Kedron south area, beneath the Kedron Park Hotel. Blasts will continue weekly in the south. The CRT was also present in the community for activities resulting from the Saturday Kedron central blast</li> <li>• The CRT liaised with Norman Street residents for night works conducted at the intersection of Norman Street and Lutwyche Road</li> <li>• The CRT completed two letterbox drops to advise residents of Stafford Road widening activities and upcoming construction activities in September including night work scheduled in preparation for the roof slab concrete pour for the eastbound on-ramp</li> <li>• The Kedron CRT continues to distribute the Kedron Park 7 Day Medical Centre’s weekly ‘business as usual’ flyer to the wider northern suburbs</li> <li>• Ongoing meetings with residents and businesses as required.</li> </ul>	
--	---	--

# MINUTES OF MEETING

Meeting Number 24

CLG	Kedron Community Liaison Group				
Location:	Visitor Information Centre, Lutwyche	Date:	13 October 10	Time:	6:30pm

**Next Meeting:**

**Location:** Visitor Information Centre, Lutwyche      **Date:** 10 November 2010      **Time:** 6:30pm