

COMMUNITY NOTICE

Date:
Ref No:

14 September 2010
1012

BOWEN HILLS

Campbell Street - Traffic Changes and Site Establishment

From Friday 17 September traffic changes and site establishment works will commence in Campbell Street in preparation for the construction of the Campbell Street Bridge. The bridge will provide motorists with a connection between Campbell Street and the Airport Link Tunnel on project completion in 2012.

The following traffic changes and works are required as part of the site establishment activities (refer map for details):

- Campbell Street will become one way westbound between the Mayne Road intersection and Tufton Street, with the removal of on street parking on the southern side of the street. Line marking – this will involve **night works**
- Installation of concrete barriers and fencing along the centre line of Campbell Street
- Installation of temporary traffic signage

Site establishment activities will include:

- Installation of concrete barriers, temporary fencing and compounds
- Installation of temporary traffic signage
- Demolition works
- Excavation works
- Delivery of plant and equipment

What to expect

- Pedestrian, cycle and vehicle detours (refer to map for changed traffic conditions)
- Large equipment within the construction site
- Construction vehicle movements in and out of the work site
- Construction noise from cranes, excavators, piling, drilling and saw cutting
- Construction vehicle movements
- Removal of materials from site

For further information please contact our Community Relations team:

24 Hour (freecall)
Community Hotline:
or contactus@tjh.com.au

1800 721 783

www.brisconnections.com.au

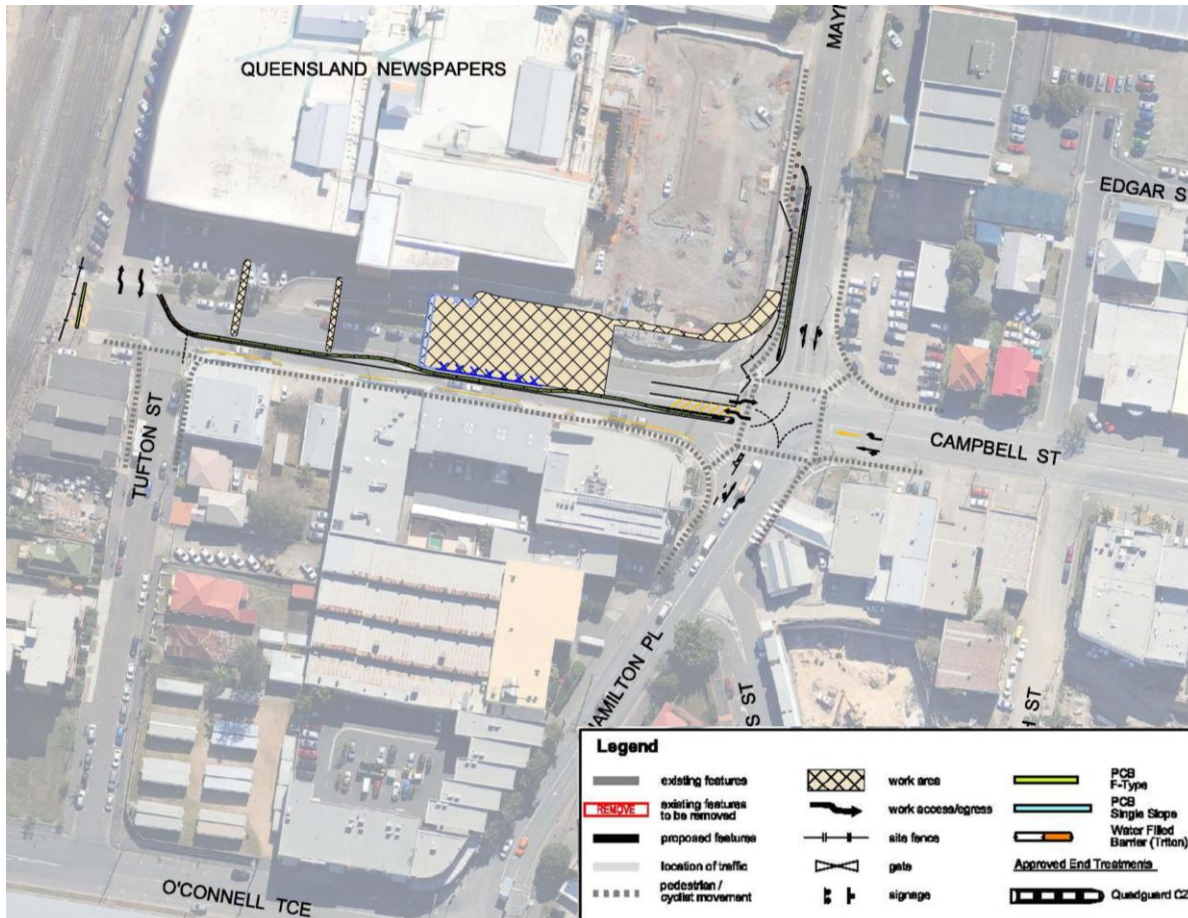
smarter ways to move



airportlink
 northernbusway
 windsor to kedron
 airport roundaboutupgrade



COMMUNITY NOTICE



Want More Information?

Please call the Bowen Hills Community Relations Team (Kym and Amy) if you would like more information about these activities on 1800 721 783.

For further information please contact our Community Relations team:

24 Hour (freecall)
 Community Hotline:

1800 721 783

or contactus@tjh.com.au

www.brisconnections.com.au

smarter ways to move