

COMMUNITY notice



KEDRON

DATE 7 December 2011

REFERENCE 1488

Stafford Road Widening Update

Work to widen Stafford Road, Gordon Park/Kedron, continues between Rose Lane and Bradley Avenue. On 14 and 15 December, night work will be undertaken between 8pm and 5am to prepare for the next phase of works. This work will include the reopening of Beaconsfield Terrace. From 16 December, Figgis Street will be closed at Stafford Road and Glenfern Street will be partially closed at Stafford Road for approximately 12 weeks*, weather permitting (see map overleaf).

Clarence Road will remain closed for approximately three weeks for the completion of drainage works.

Stafford Road will be widened by 0.5 metres to 1.5 metres. At no stage will property resumption be required for this work. Construction has been segmented into stages to help minimise the impacts on the community.

The widening will facilitate construction of the eastbound on-ramp and the two westbound off-ramps of Airport Link. Access for local residents will be intermittently affected throughout the work; however alternative arrangements will be implemented, including parking areas and pedestrian detours.

*Work will cease at 6.30pm on Friday, 23 December 2011 and will re-commence at 6.30am on Tuesday, 3 January 2012. Driveway access will be available during this Christmas period.

Activity	What to expect
<ul style="list-style-type: none">Asphalt and tram track removalExcavationInstall drainagePlacement of pavement gravelsPlacement of street lightsInstall kerb and gutterInstall asphalt pavementsLine-markingVacuum excavation	<ul style="list-style-type: none">Disruption to water servicesServices location worksSaw cuttingConstruction vehicle movementsCompactorsLane closures, under traffic controlRemoval of excavated materialConstruction noiseSome vibrationBack-fillingWork on elevated platforms

Some disruption to water supply may occur during the works, further notification will be provided about this if required.

If you have any questions about this work, please contact us on the 24-hour Community Hotline 1800 721 783 (freecall), or for more information about these projects please visit our website www.brisconnections.com.au.



24 Hour Community hotline

1800 721 783

contactus@tjh.com.au

Register now for SMS & Email updates
brisconnections.com.au



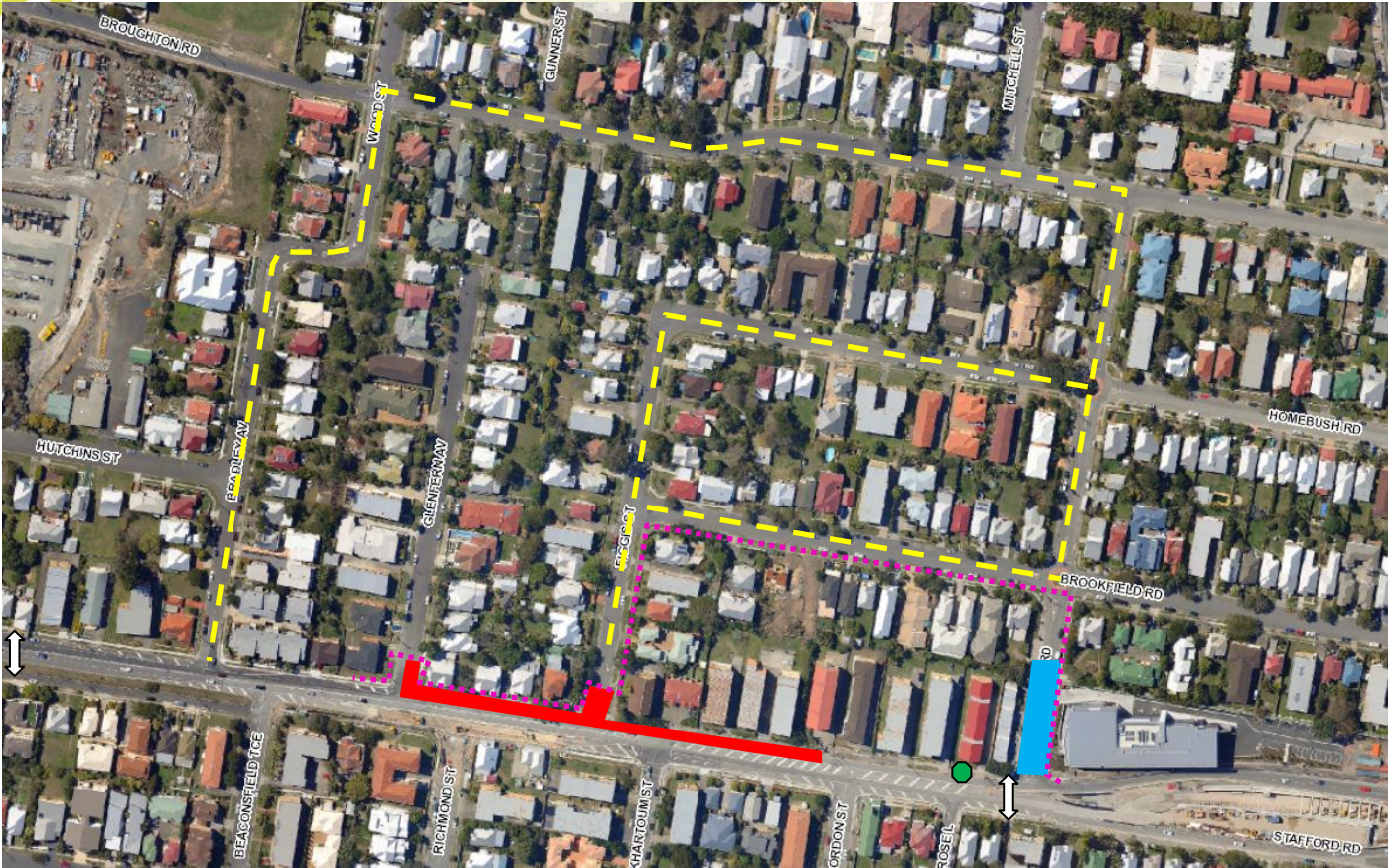
COMMUNITY notice



KEDRON

DATE

REFERENCE



- Area of work for widening
- Drainage works
- Traffic Detour route
- Bus Stop
- Pedestrian Detour
- Pedestrian Crossing

AUSTRALIA'S LARGEST INFRASTRUCTURE PROJECT
complete 30 June 2012

Impacts

- Two nights of work for line marking and placement of barriers
- Re-opening of Beaconsfield Terrace, followed by Clarence Road
- Figgis Street and Glenfern Avenue (partial) temporarily closed at Stafford Road for approximately 12 weeks. Access will be provided for residents on Stafford Road, under traffic control.
- Access to some driveways on Stafford Road in this location will be temporarily closed. Further information will be provided to impacted properties regarding parking arrangements. Traffic control will assist residents with accessing properties.
- The pedestrian crossing across Stafford Road at Richmond Street will be removed during this phase of work. Pedestrian access across Stafford Road will be available at Turner Road or Clarence Road.



24 Hour Community hotline
1800 721 783
contactus@tjh.com.au
 Register now for SMS & Email updates
brisconnections.com.au

