



airportlink
northernbusway
windsor to kedron
airport roundabout upgrade



COMMUNITY NOTICE

Date of issue 16 June 2010
Ref 0846

Airport Roundabout Precinct

NIGHT WORK - Nudgee Road intersection, Gateway Motorway and East-West Arterial Road

Throughout June and July 2010, night work will take place between 8pm and 5am to upgrade the Nudgee Road intersection, the Gateway Motorway northbound on and off ramps and realign East West Arterial Road will be ongoing (refer map overleaf).

This work must be undertaken at night time, as special circumstances work, to minimise traffic disruption to the road network.

Service Relocations

The installation of conduits and storm-water lines will be undertaken at the Nudgee Road intersection. Work will initially take place within the southern section of the signalised intersection followed by the northern section at a later date.

Storm-water lines will also be installed across the median strip between Nudgee Road and the Airport Roundabout. Activities will include:

- Saw cutting and excavation including jack hammering for the conduit and storm-water lines
- Installation of conduits and storm-water lines
- Use of roller to compact the area upon completion of excavation

East-West Arterial Road

From the middle of July 2010 approximately one week of night work will be required from approximately Nudgee Road and west for approximately 400 metres in preparation for the realignment of eastbound East West Arterial Road. Activities will include:

- Installation of concrete barriers
- Saw cutting and jack hammering of existing concrete barriers
- Pavement construction, asphaltting and line marking
- Removal of an existing light pole and installation of temporary lighting
- Road lighting installation

Gateway Motorway Northbound Lanes

Work to shape soil embankments and hydro-mulching will take place on the western side of the Gateway Motorway northbound on and off ramp. Activities will include:

- Spraying of hydro-mulch onto soil embankments
- Shaping of soil embankments

UP COMING CHANGED TRAFFIC CONDITIONS

During July 2010, the eastbound carriageway of East West Arterial Road will be realigned north from approximately Nudgee Road to the Widdop Street off-ramp.

For further information please contact our Community Relations team:

24 Hour (freecall)
Community Hotline:

1800 721 783

or contactus@tjh.com.au

www.brisconnections.com.au

smarter ways to move



airportlink
northernbusway
windsor to kedron
airport roundabout upgrade



COMMUNITY NOTICE

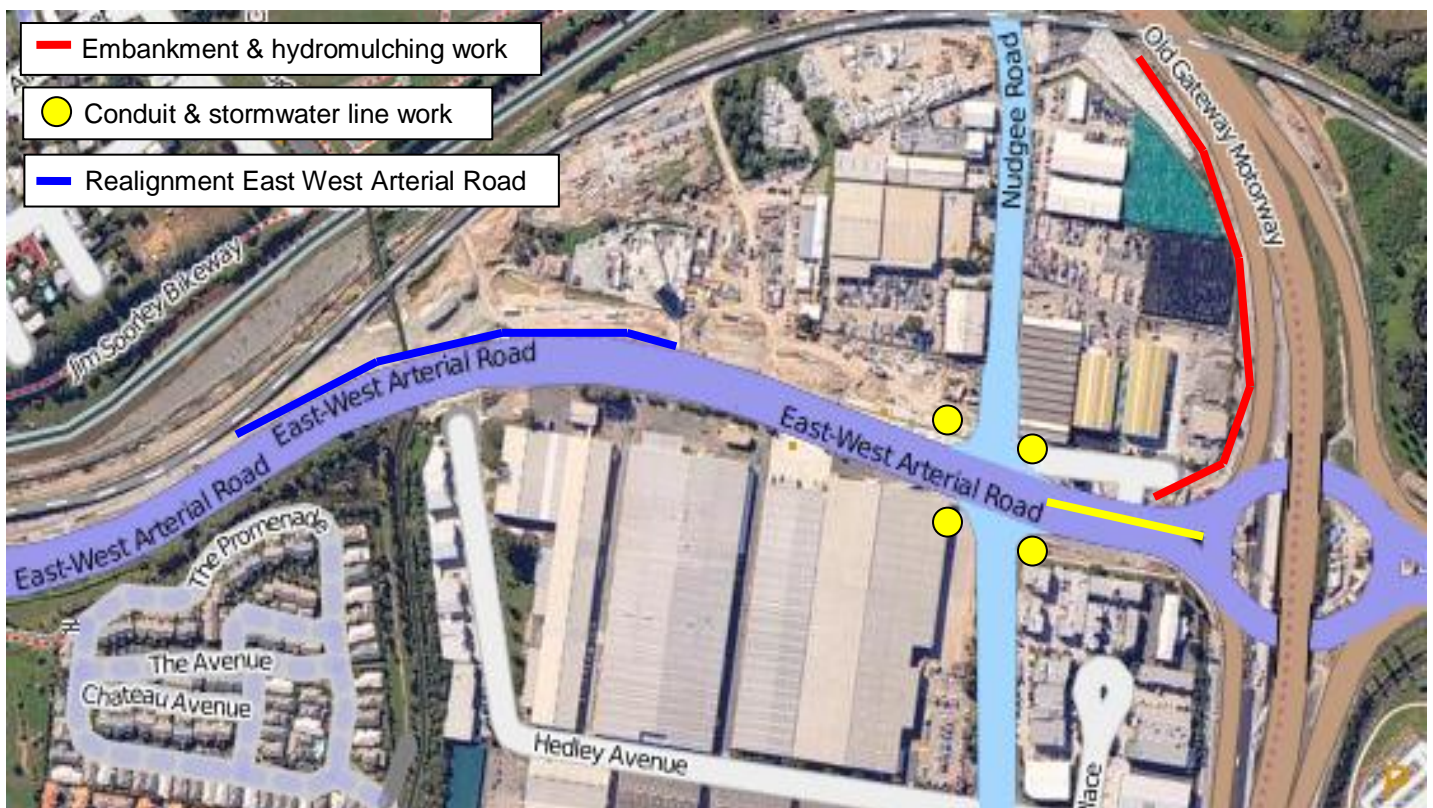
What to expect:

- Excavation, loading and removal of excavated materials
- Delivery of road base, materials and equipment
- Temporary construction lighting
- Temporary lane closures managed with traffic control
- Construction vehicle movements
- Operation of construction machinery including excavator, roller, concrete trucks
- Construction noise, including lighting tower generators, reversing alarms, vehicles, rock hammers and saw cutting, where required

The Airport Link project understands night works can cause a disturbance and is adopting measures to mitigate construction impacts where possible. These measures include use of loud machinery only when necessary, unloading material away from residential areas and replacing reverse beepers with a lower pitched option.

Keeping you informed

If you would like more information about upcoming construction activities please call the Airport Roundabout Upgrade Community Relations Team on 1800 721 783.



For further information please contact our Community Relations team:

24 Hour (freecall)
Community Hotline:

1800 721 783

or contactus@tjh.com.au

www.brisconnections.com.au

smarter ways to move